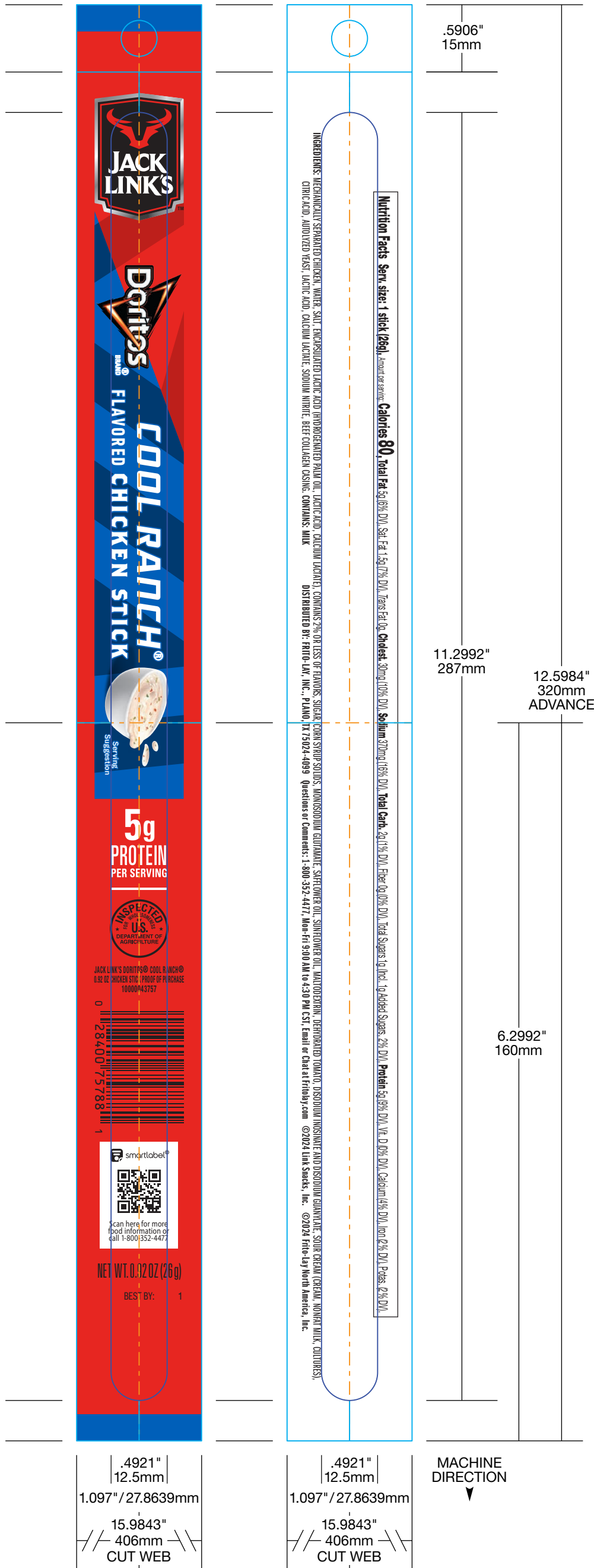


SIDE A NON SEALANT SIDE B SEALANT



9860 S. Franklin Dr, Franklin, WI 53132  
 P 414.421.8262 F 414.421.1594  
 E [contact\\_us@pen-and-inc.com](mailto:contact_us@pen-and-inc.com)

240416014

R1: 06/17/24	R2: 09/10/24	R3:	R4:
R5:	R6:	R7:	R8:

CHECK & SIGN:  ITEM APPROVED  APPROVED WITH NOTED CHANGES  NOT APPROVED

SIGNATURE: \_\_\_\_\_ DATE: \_\_\_\_\_  
 PLEASE REVIEW THIS PROOF for copy, content, dimensional layout, color break, bar code, metallic areas, etc. Spot colors are simulated for this proof. Your approval confirms accuracy of the graphics and all information. Pen and Inc. will not be liable for any errors or omissions after proof is approved.  
 LIMITATION OF LIABILITY: This proof must be thoroughly inspected upon receipt of the same. It is the responsibility of the recipient to examine all electronic files, proofs, films and plates, prior to printing. If errors are found, please contact our Customer Service Department. The liability of Pen and Inc. shall be limited to correcting or replacing its own product. Pen and Inc. will not be liable for any other loss or damage including, but not limited to, the cost of electronic files, proofs, films, printing plates or cylinders, printed material, overtime, press delays or downtime, and/or missing insertion dates/deadlines.

LINE BLACK	SCREEN BLACK	LINE PMS 2035	LINE PMS 654	LINE PMS 300	LINE BLACK
SCREEN CYAN	SCREEN MAGENTA	SCREEN YELLOW	LINE HD WHITE FLOOD		

(FRONT) (BACK)

PROOF ORIENTATION DOES NOT REPRESENT FINAL UNWIND

REPRESENTS DIELINE DOES NOT PRINT