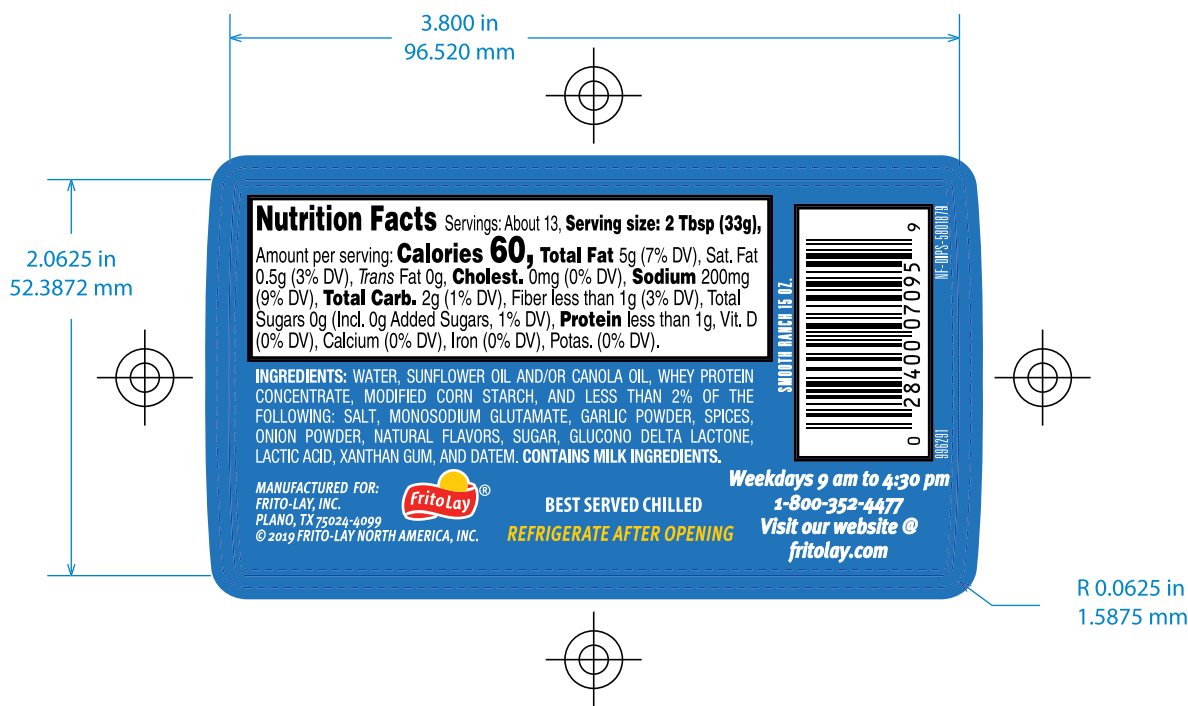

 <b>SGS</b> SGS Dallas <small>(214) 360-9000</small>	<b>SGS#:</b> 5801864	FRITO-LAY NORTH AMERICA INC (PKG) Dips 2019 Lay's Ranch Dip Front Label 15oz					
Flood White 1	PANTONE 7683 C 2	Yellow 3	Magenta 4	Cyan 5	Black 6	Line Black 7	RS White 8

<b>SGS Contact:</b> Matthew Whalin matthew.whalin@sgsco.com	<b>SGS Client:</b> FRITO-LAY NORTH AMERICA INC (PKG)	<b>Die:</b>	<b>UPC: -</b> <b>Spec ID:</b> BP 303392 Stk 996292
---	---	-------------	---

**Limitation of Liability:** The supplied materials should be thoroughly inspected immediately upon receipt by the recipient for all content, placement and copy accuracy. It is also the responsibility of the recipient printer to examine and proofread all supplied materials before producing image carriers and printing final product. Should the supplied materials be found to be incorrect please contact an SGS representative immediately. The liability of SGS shall be limited to correcting its own product. SGS will not be responsible for any loss or damage including but not limited to the cost of product, print, image carriers, press delays or other ancillary cost.



 <b>SGS</b> <small>SGS Dallas (214) 969-9000</small>		<b>SGS#:</b> 5801879	FRITO-LAY NORTH AMERICA INC (PKG) Dips 2019 Lay's Ranch Dip Back Label 15oz			
White 1	White 2	<b>PANTONE</b> 116 C	<b>PANTONE</b> 485 C	<b>PANTONE</b> 7683 C	<b>Black</b>	
1	2	3	4	5	6	

<b>SGS Contact:</b> Matthew Whalin matthew.whalin@sgsco.com	<b>SGS Client:</b> FRITO-LAY NORTH AMERICA INC (PKG)	<b>Die:</b>	<b>UPC:</b> 028400070959 <b>Spec ID:</b> BP 303392 Stk 996291
---	---	-------------	--

**Limitation of Liability:** The supplied materials should be thoroughly inspected immediately upon receipt by the recipient for all content, placement and copy accuracy. It is also the responsibility of the recipient printer to examine and proofread all supplied materials before producing image carriers and printing final product. Should the supplied materials be found to be incorrect please contact an SGS representative immediately. The liability of SGS shall be limited to correcting its own product. SGS will not be responsible for any loss or damage including but not limited to the cost of product, print, image carriers, press delays or other ancillary cost.